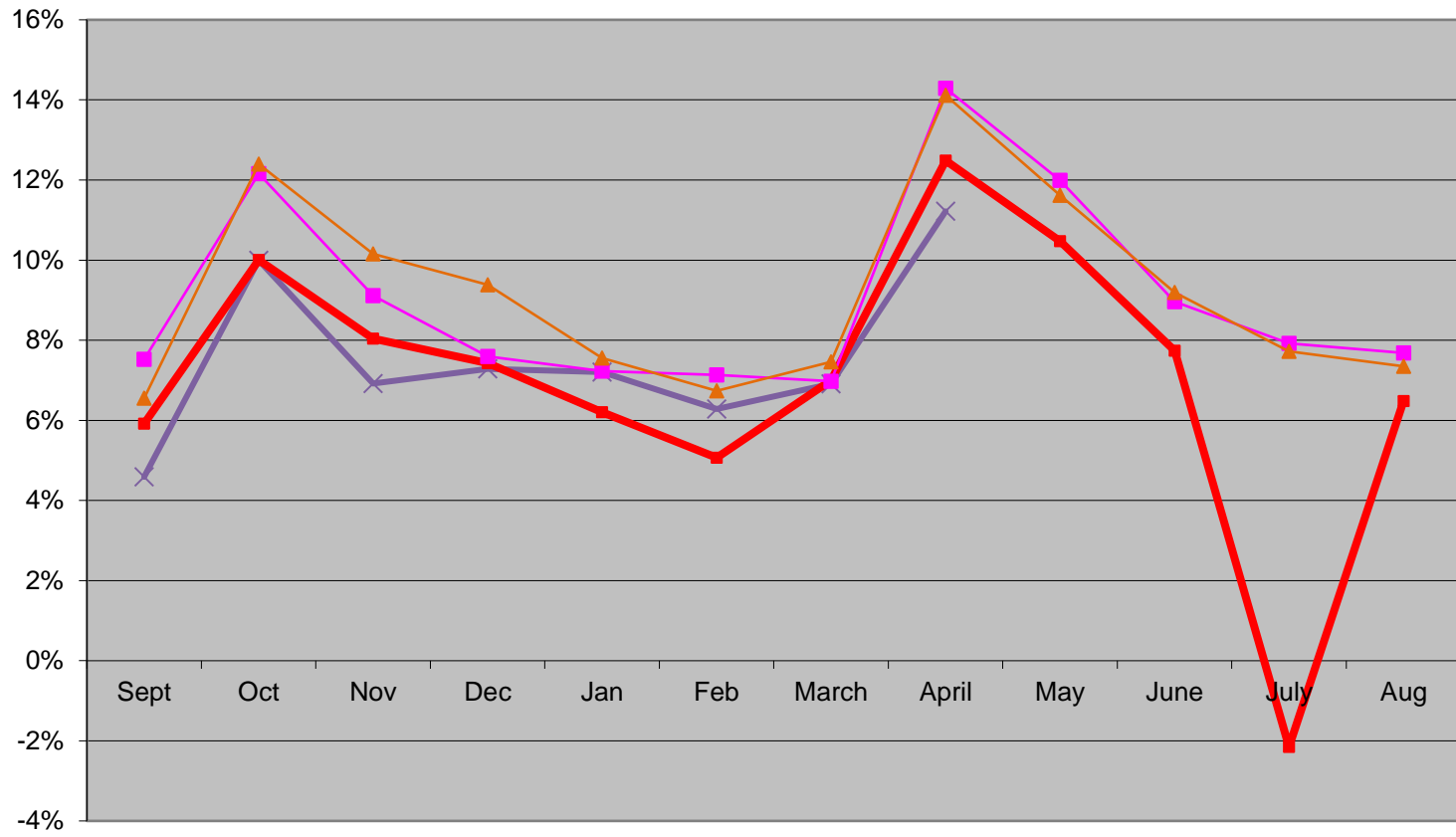


Sequim School District #323

General Fund Comparative As of April 30, 2017 and 2016

	2016-17 thru 04/30/2017			2015-16 thru 04/30/2016			% change
	Budget	Yr-To-Date	% Rec'd	Budget	Yr-To-Date	% Rec'd	15/16 to 16/17
Revenues							
1000 Local Taxes	5,780,000	5,109,108	88.4%	5,780,000	5,130,662	88.8%	-0.4%
2000 Local Support Nontax	432,900	650,022	150.2%	414,600	350,064	84.4%	85.7%
3000 State, General Purpose	18,075,946	12,676,590	70.1%	16,949,196	11,945,809	70.5%	6.1%
4000 State, Special Purpose	4,378,367	2,897,835	66.2%	4,191,922	2,709,539	64.6%	6.9%
5000 Federal, General Purpose	120,000	84,491	70.4%	120,000	132,179	110.1%	-36.1%
6000 Federal, Special Purpose	2,506,693	1,222,006	48.7%	2,255,650	1,206,258	53.5%	1.3%
7000 Revenues Fr Oth Sch Dist	-			-			
8000 Rev Fr Oth Agncy & Assoc	-			-	2,819		-100.0%
9000 Other Financing Sources	-	1,304		-			
Total Revenues	31,293,906	22,641,356	72.4%	29,711,368	21,477,329	72.3%	5.4%
Expenditures							
	Budget	Yr-To-Date	% Spent	Budget	Yr-To-Date	% Spent	
00 Regular Instruction	17,413,391	11,262,857	64.7%	16,344,329	10,726,604	65.6%	5.0%
20 Special Ed Instruction	3,919,204	2,815,961	71.9%	3,622,143	2,723,607	75.2%	3.4%
30 Voc Ed Instruction	1,403,055	901,681	64.3%	1,362,528	896,422	65.8%	0.6%
50&60 Compensatory Ed Instruct	1,943,234	1,117,029	57.5%	1,786,570	980,055	54.9%	14.0%
70 Other Instructional Pgms	139,553	72,203	51.7%	439,679	89,878	20.4%	-19.7%
80 Community Services	19,365	3,334	17.2%	19,365	23,775	122.8%	-86.0%
90 Support	6,638,942	4,828,003	72.7%	6,201,256	4,271,482	68.9%	13.0%
Total Expenditures	31,476,744	21,001,068	66.7%	29,775,870	19,711,824	66.2%	6.5%
Transfers to Debt Service Fd	-	37,456		376,800	38,570	10.2%	
Revenues Over (Under) Expend	(182,838)	1,602,831		(441,302)	1,726,935		-7.2%
Beginning Fund Balance	-	1,928,220		2,230,000	1,990,783		
Ending Fund Balance	(182,838)	3,531,052		1,788,698	3,717,719		-5.0%
Fund Balance as % of Budgeted Expenditures	-0.58%	11.22%		6.01%	12.49%		

FUND BALANCE AS % OF TOTAL EXPENDITURES



—x— 2016-17 —■— 2015-16 —■— 2014-15 —▲— 2013-14

REVENUES OVER (UNDER) EXPENDITURES

